

Tomas Bata University in Zlín



international@utb.cz



TOMAS BATA
UNIVERSITY
IN ZLÍN

**BE IN
STUDY IN
ZLÍN**

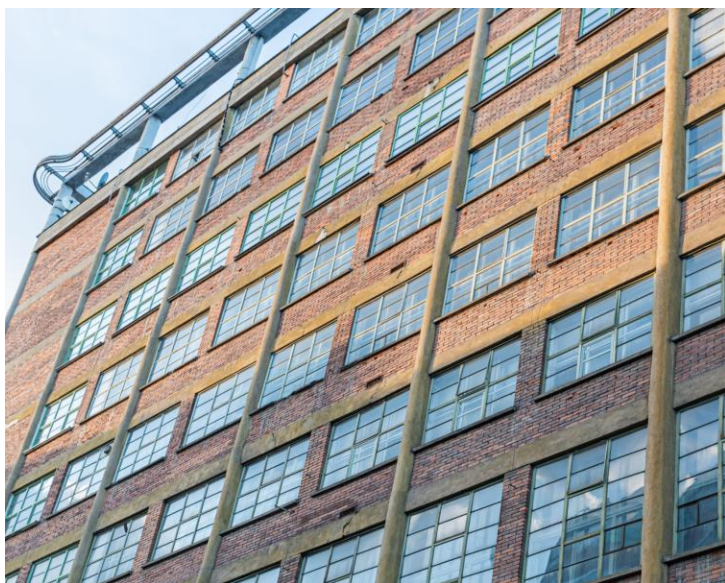


**WHERE TO FIND
TBU?**





ZLÍN





Zlín of today can be best characterized as a student town since there are about 9 thousand university students!

The cost of living is relatively low. The town and the whole region is a very safe place to live.

Zlín is a modern, functionalist, and lively town representing the legacy of the world-famous shoe producer Tomas Bata.



TOMAS BATA UNIVERSITY IN ZLÍN

6 faculties +
university
institute

More than 250 degree
programmes
(Bachelor's, Master's, Doctoral)
out of which almost
60 are in English

More than 9,300 students
out of which more than
1,000 are international
students

More than 1,000
employees
out of which more than
500 are academics



Exchange studies

Erasmus+ program
Any other exchange program

Study stay / Traineeship

In Bachelor, Master or Ph.D. level

More than 150 courses at 6 faculties

Modern university facilities

Courses taught in English at
the department of:

Mathematics

Process Control

Security Engineering

Informatics and Artificial Intelligence

Automation and Control Engineering

Computer and Communication Systems

+ Traineeships in different fields

Faculty of Applied
Informatics



Faculty of Humanities

Courses taught in English at
the department of:

School Education

Pedagogical Sciences

Language Center

Social Pedagogy

Modern Languages and Literature – English Philology

Modern Languages and Literature – German Philology

Courses taught in English at
the department of:

Economics

Business Administration

Finance and Accounting

Management and Marketing

Statistics and Quantitative Methods

Industrial Engineering and Information Systems

Regional Development, Public Sector Administration and Law

**Faculty of
Management and
Economics**



Faculty of Multimedia Communications

Courses taught in English at the:

Animation Studio and Digital Design Studio

Glass Design Studio

Shoe Design and Fashion Design Studio

Graphic Design Studio

Spatial Design Studio and Industrial Design Studio

Product Design Studio and Advertising Photography Studio

Audiovisual Arts Studio

Art Management, Marketing Communications, Dept. of
Theoretical studies

Courses taught in English at
the department of:

Chemistry

Polymer Engineering

Production Engineering

Food Technology

Food Analysis and Chemistry

Fat, Surfactant and Cosmetics Technology

Environmental Protection Engineering

Physics and Materials Engineering

+ Traineeships in differend fields

Faculty of Technology



**Faculty of Logistics
and Crisis
Management**

Courses taught in English at the:

Department of Logistics

Department of Crisis Management

Department of Population Protection

Department of Environmental Security



INTERNATIONAL RANKINGS

- TBU ranked among **TOP 40 universities founded after 2000**
- TBU ranked as **The BEST Czech university in Business & Management, Accounting & Finance** in Times Higher Education World University Rankings 2020





INTERNATIONAL COOPERATION

- Cooperation with universities from **67 countries**
- **500+** partner institutions all over the world
- **12%** international students
- **300** incoming exchange students every year
- **Summer schools**
- Student organizations





EXTRAS FOR EXCHANGE STUDENTS

- Erasmus Student Network (ESN) Zlín
- Accommodation in TBU Halls of Residence (approx. EUR 175/month (bed in double-room))
- One-time accommodation **scholarship** per semester
- 2 **discounted meals** in TBU Refectory per working day (approx. EUR 4 - 5 (soup and main dish))
- Free Czech language course (3 ECTS)
- Free access to the TBU Library





**HALLS OF
RESIDENCE
& CATERING
FACILITIES**

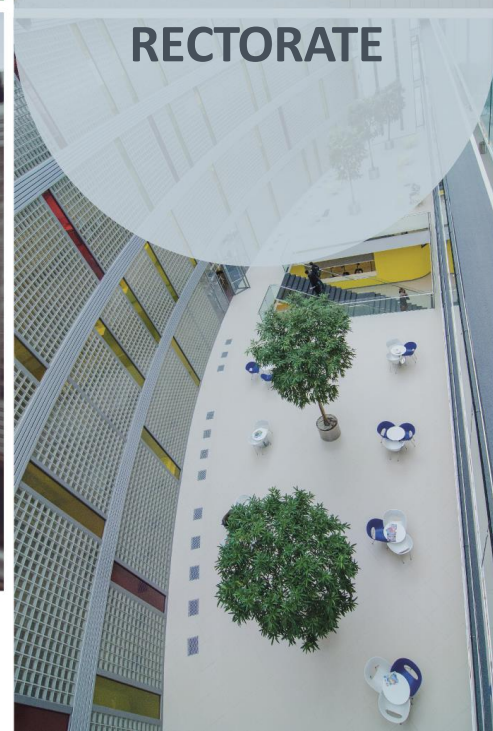
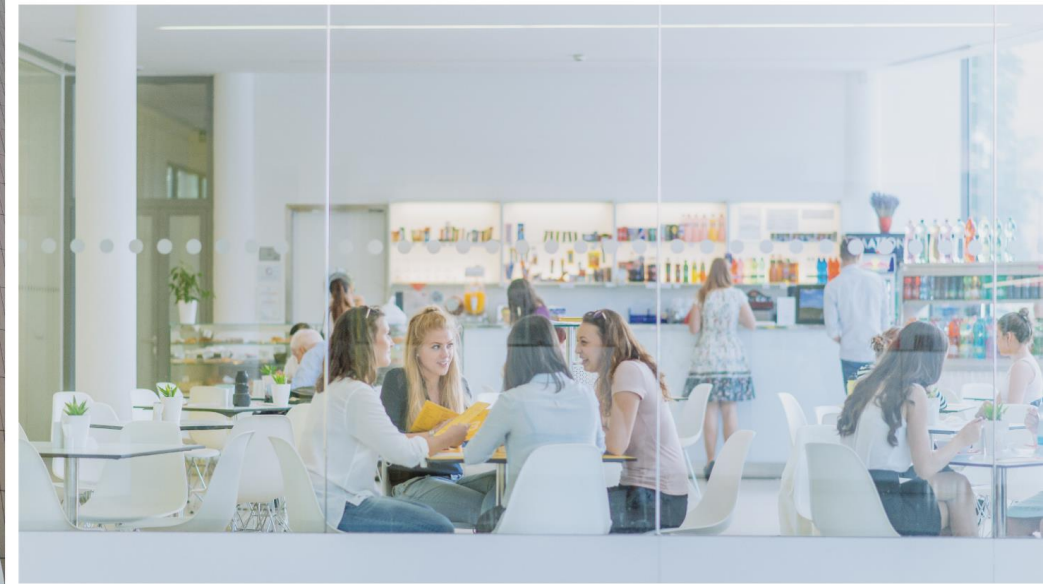


Examples of prices:

McDonald's Big Mac – approx. EUR 4,4
Coca-Cola 2liters bottle – approx. EUR 2



**LIBRARY
RECTORATE**





STUDENT LIFE IN ZLÍN





STUDENT
LIFE IN ZLÍN





WHY TBU IN ZLÍN?





WHY TBU
IN ZLÍN?





WHY TBU
IN ZLÍN?





APPLY FOR EXCHANGE STUDY STAY

- Deadlines:
 - **June 1** (May 1 for non-EU nationals) – for the winter semester or full academic year
 - **November 1** (October 1 for non-EU nationals) – for the summer semester
- Contact incoming@utb.cz



SEE YOU IN ZLÍN!





www.utb.cz